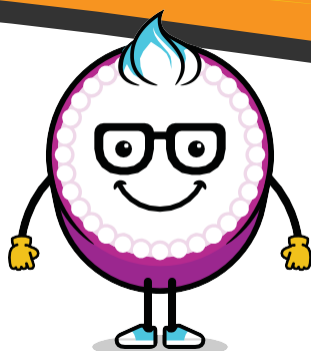


PRINTER & SCANNER SET UP & INSTALLATION INSTRUCTIONS

 VISIT
VINCENTSELECTION.COM
FOR PRINTER
FORMATION VIDEOS!



CONTENTS



Shown: Epson XP-4100 for example only.

- Printer
- Power Cable
- USB Cable
- Removable Output Tray
- Sample Pack of Ink Cartridges
- Complete cleaning kit (solution, brushes and cartridges)

** Remove all clear plastic protective wrap, foam and blue tape from the Printer.*

PRINTER SET UP



INK CARTRIDGE INSTALLATION



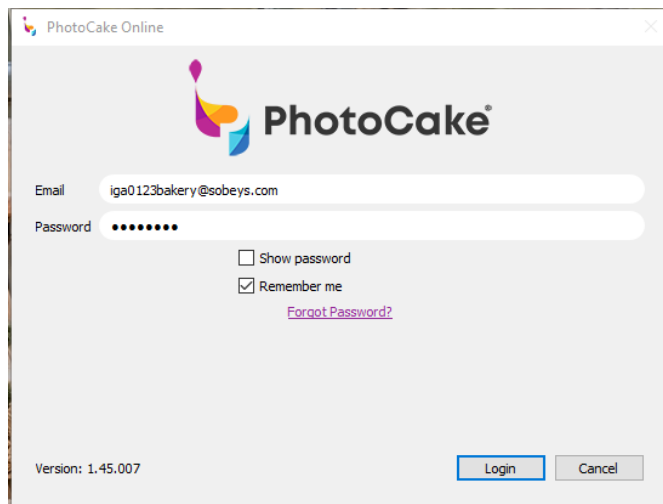
1. Extend the Input Tray on the back of the Printer. Adjust the gray paper feed guides to their furthest position.
 2. Extend the Output Tray in front of the Printer and lift the tab up on the end of the extension.
 3. Slide the removable Output Tray onto the Printer's Output Tray extension ensuring the extension tab slides through the slot on the removable tray.
 4. Connect the Power Cable into the back and power it on.
-
1. After selecting your language, follow prompts on screen to install Ink Cartridges.
 2. Remove the yellow pull tab before installing Ink Cartridges.
 3. Once Ink Cartridges have been installed, close the Printer cover and press 'OK'.
 4. Ink Cartridge initialization is completed. The Home Screen will now appear.

LOGIN TO THE PHOTOCAKE APP

- You can now select the PhotoCake tab located on the desktop



- Enter the connection information provided by Vincent Selection



Congratulation!

Your Printer Set-Up is now complete!

